



The New SPAIX® Configurator V3

Web-based Pump Sales Software at the Highest Level

VSX – VOGEL SOFTWARE launched the latest generation of the web-based Pump Sales Software Spaix V3 that comes up with many new and improved functions.

The New Functions at a Glance:

▶ **Duty Point Determination**

The hydraulic selection within Spaix V3 is easily extendable with a detailed duty point calculation. This function can be integrated to the program with the add-on tool Spaix PipeCalc.

▶ **Advanced Performance Curve Functions within the Product Configuration**

Due to new performance curve functions, e.g. the simulation of impeller trimming on single performance curves; the Spaix PumpConfigurator can be applied in a more flexible and optimized way.

▶ **Newly Structured Project and Quote Management**

Especially the advanced editing possibilities of the shopping basket and the datasheets, but also the improvements in the administration optimize the project management including quote preparation within the new Spaix V3.

▶ **Efficient Collaboration Through Project Sharing**

Due to the newly integrated approval function a project can be unblocked for other users based on predefined rules. Furthermore, a project owner can manually give other users the right to access the project.

► **Improved Spare Parts Management**

The selection of spare parts within the new Spaix V3 becomes more convenient and easier to handle through the Zoom&Click functionality. Moreover, the reverse search from pumps to a certain spare part can be included to the program with an add-on tool.

► **Detailed User Administration**

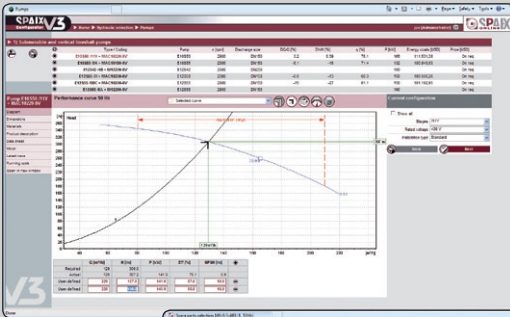
The extended user administration allows the allocation of users to certain user groups as well as the repartition of different user rights.

► **High Usability**

One example for the improved usability of the latest Spaix V3 version is the possibility to retract windows within the scope of the pump selection. This function enables the operator to use the space on the screen especially for the displaying of diagrams.

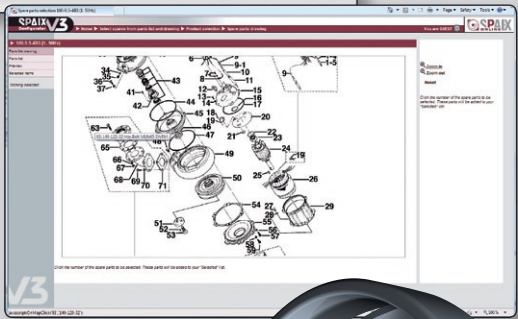
► **High-Capacity Performance**

The renewed increase of the software performance enables for instance a quicker treatment of search inquiries by the system.



Within the hydraulic selection the search for the best pump is performed in the area of application and the operating data.

Due to the new Point&Click functionality the spare part selection becomes even more convenient.



Learn more at:
www.vsx.net

